



# cROOM

Technical equipment shelters as a part of a service package  
**PRODUCTION, EQUIPPING AND DELIVERY**

**HAAVIKKO**  
H A A R R I

cRoom equipment shelters by Harri Haavikko Oy  
Lekatie 6 / FI-50170 Mikkeli / Business ID: 2747646-3



Technical equipment shelters straight from the manufacturer

### cRoom equipment shelters from Finland

cRoom is a cost-effective solution of high quality.

We offer equipment shelters as a part of a service package with account of the client's needs and wishes. Equipment shelters in our collection are comprehensively suitable for various applications.

### Our collection of equipment shelters:

- Equipment shelter Salomo
- Shelter for telecom equipment Samoa
- Shelter for telecom equipment Manua
- Electrical equipment shelter Marshall
- Safety equipment shelter Tonga
- Customized solutions of equipment shelters: ask for more information from our sales department and check out our references:  
[www.croom.fi](http://www.croom.fi)

### Equipment shelters are manufactured by Harri Haavikko Oy

We design and manufacture equipment shelters with account of the client's needs and wishes. Our service package includes needs assessment, designing, production, equipping, transportation and installation.

The equipment shelters are made in Finland. They are manufactured and equipped in our own factory in Mikkeli.

**HAAVIKKO**  
H A A V I K K O

**cRoom equipment shelters by Harri Haavikko Oy**

Lekatie 6 / FI-50170 Mikkeli / Business ID: 2747646-3



# CROOM

## Equipment shelter Salomo

Equipment shelter Salomo is intended for sites where a large facility for equipment is not required or cannot be accommodated. Salomo can be used, for example, to protect and accommodate technological equipment of a fuel distribution station.

The equipment shelter can be equipped with a ready-to-install plinth, so that delivery and installation can be done at the same time, thus saving time and costs.

### Salomo – technical data

#### Dimensions

- Weight 500 kg
- Floor load capacity 950 kg/m<sup>2</sup>
- Volume 4,8 m<sup>3</sup>
- Area 2,1 m<sup>2</sup> (floor surface area) / 3 m<sup>2</sup> (building area)
- Ceiling height 2,2 m

#### Wall structure

- U-value 0,39
- Standard wall frame made of wood
- Fire class P3 / EI 30
- The internal wall material is alternatively sheet metal, fiberglass or plywood; standard color is RR20
- The external wall material is alternatively sheet metal or fiberglass; standard colors are RR22 and RR23 for walls, RR23 for moldings and RR33 for the roof
- The lightweight wall structure allows for easy and quick transfer and installation of the equipment shelter

#### Equipping options

- Building electrification, e.g. lighting, grounding, cable ducts and inlets
- Backup power equipment
- A forced ventilation system, gutters and a plinth

#### Standard equipment:

- A crew hatch in the floor
- A supply air valve with a filter and a duct fan
- A lock, a door handle and pull handles
- Lifting handles on the roof
- Drawings required for permits
- Documentation and a CE mark

#### Change options

- Special cladding
- Steel frame



#### Color chart (RR/RAL)

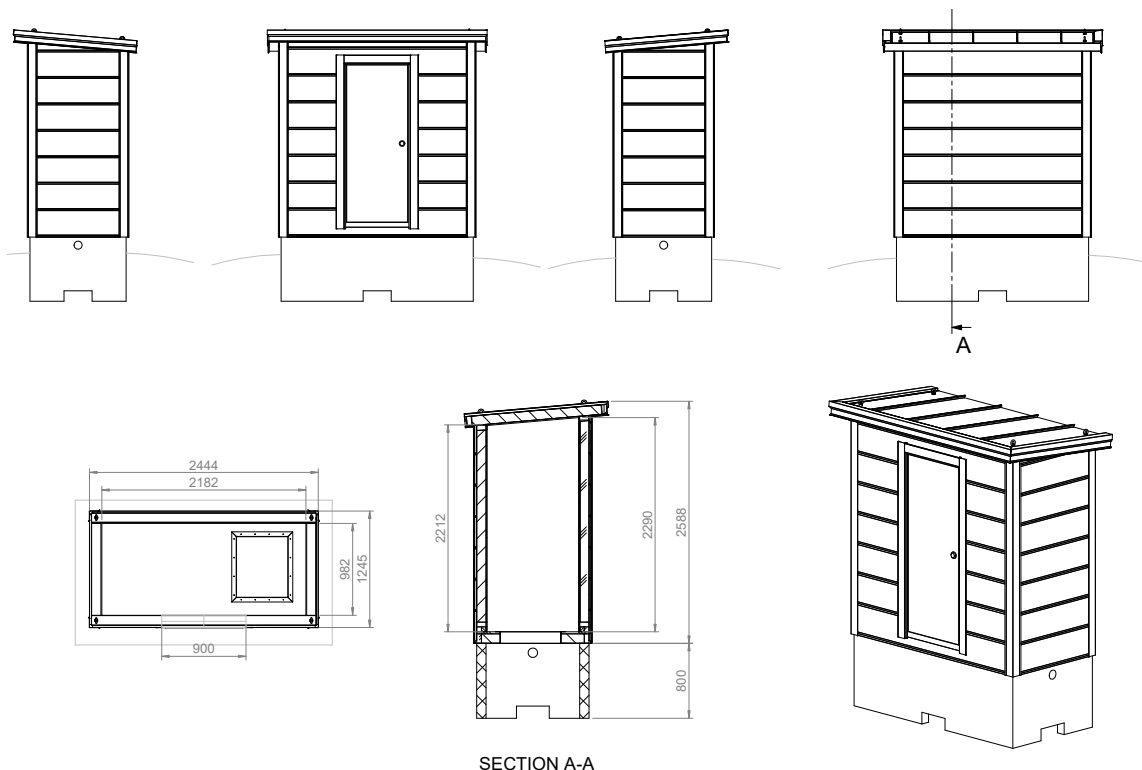
Color examples are indicative

RR20  
RAL 9001

RR22  
RAL 7045

RR23  
RAL 7024

RR33  
RAL 9005



#### Production, equipping and & delivery:

Harri Haavikko Oy / Lekatie 6 / FI-50170 Mikkeli / Business ID: 2747646-3  
www.croom.fi

**HAAVIKKO**  
H A R R I





# CROOM

## Shelter for telecom equipment Samoa

The larger shelter for telecom equipment in our collection is designed for mobile network operators and providers that need a high-quality and secure equipment shelter to ensure impeccable operation of their networks and telecommunications.

The shelter for telecom equipment can also be customized in terms of equipping and architecture, thus ensuring that the client's requirements are met, and the general appearance is what the client wants it to be.

### Samoa – technical data

#### Dimensions

- Weight 1700 kg
- Floor load capacity 950 kg/m<sup>2</sup>
- Volume 28,5 m<sup>3</sup>
- Area 10 m<sup>2</sup> (floor surface area) / 11,5 m<sup>2</sup> (building area)
- Ceiling height 2,5 m

#### Wall structure

- U-value 0,39
- Fire class P3 / EI 30
- The internal wall material is alternatively sheet metal, fiberglass or plywood; standard color is RR20
- The external wall material is alternatively sheet metal or fiberglass; standard colors are RR22 and RR23 for walls, and RR33 for moldings and the roof
- The lightweight wall structure allows for easy and quick transfer and installation of the equipment shelter

#### Equipping options

- Building electrification, e.g. a measuring power panel board, sockets, lighting, grounding, cable ducts and inlets
- A forced ventilation system, an air source heat pump and gutters

#### Standard equipment:

- A supply air valve with a filter and a duct fan
- A lock, a door handle and pull handles
- Lifting handles on the roof
- Drawings required for permits
- Documentation and a CE mark

#### Change options

- Special cladding
- Steel frame
- Special colors



#### Color chart (RR/RAL)

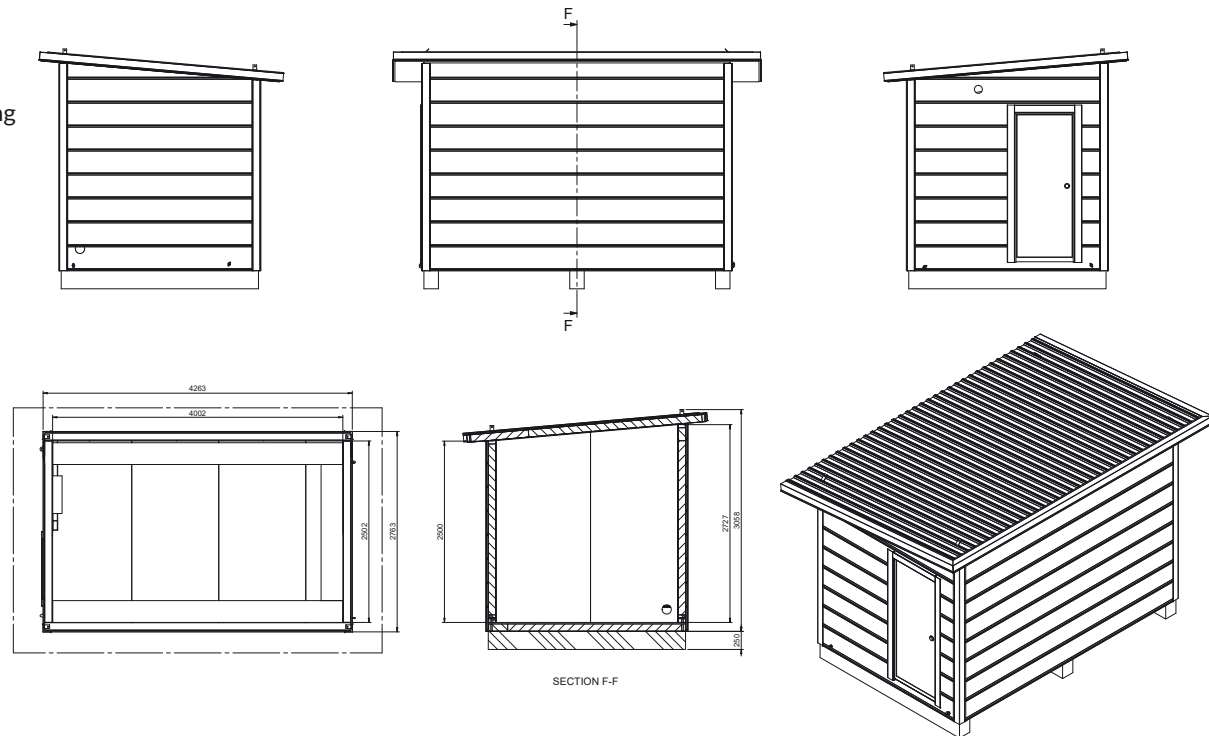
Color examples are indicative

RR20  
RAL 9001

RR22  
RAL 7045

RR23  
RAL 7024

RR33  
RAL 9005



#### Production, equipping and & delivery:

Harri Haavikko Oy / Lekatie 6 / FI-50170 Mikkeli / Business ID: 2747646-3  
www.croom.fi

**HAAVIKKO**  
HARRI



## Shelter for telecom equipment Manua

The smaller shelter for telecom equipment in our collection is designed for mobile network operators and providers that need a high-quality and secure equipment shelter to ensure impeccable operation of their networks and telecommunications.

The shelter for telecom equipment can be customized in terms of equipping and architecture, thus ensuring that the client's requirements are met.

### Manua – technical data

#### Dimensions

- Weight 1300 kg
- Floor load capacity 950 kg/m<sup>2</sup>
- Volume 22 m<sup>3</sup>
- Area 8,4 m<sup>2</sup> (floor surface area) / 10 m<sup>2</sup> (building area)
- Ceiling height 2,5 m

#### Wall structure

- U-value 0,39
- Fire class P3 / EI 30
- The internal wall material is alternatively sheet metal, fiberglass or plywood; standard color is RR20
- The external wall material is alternatively sheet metal or fiberglass; standard colors are RR22 and RR23 for walls, RR23 for moldings and RR33 for the roof
- The lightweight wall structure allows for easy and quick transfer and installation of the equipment shelter

#### Equipping options

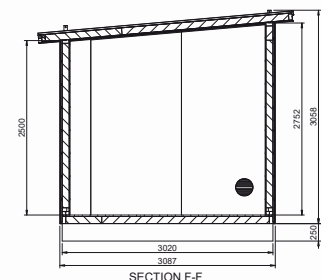
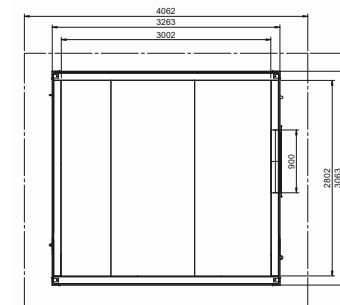
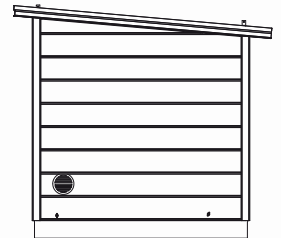
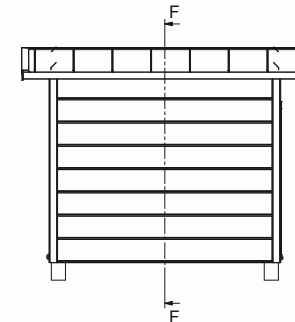
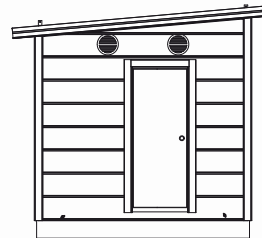
- Electrification, e.g. a measuring power panel board, lighting, sockets, grounding, cable ducts and inlets.
- A forced ventilation system, an air source heat pump and gutters

#### Standard equipment:

- A crew hatch in the floor
- A supply air valve with a filter and a duct fan
- A lock, a door handle and pull handles
- Lifting handles on the roof
- Drawings required for permits
- Documentation and a CE mark

#### Change options

- Special cladding
- Steel frame
- Special colors



#### Color chart (RR/RAL)

Color examples are indicative

RR20  
RAL 9001

RR22  
RAL 7045

RR23  
RAL 7024

RR33  
RAL 9005

#### Production, equipping and & delivery:

Harri Haavikko Oy / Lekatie 6 / FI-50170 Mikkeli / Business ID: 2747646-3  
[www.croom.fi](http://www.croom.fi)

**HAAVIKKO**  
H A R R I



## Electrical equipment shelter Marshall

A fairly big electrical equipment shelter for use at large production plants. Electrical equipment shelter Marshall enables electrification and providing enough energy for even a large unit or production plant.

Although the external dimensions of the shelter are large, Marshall is easy to move and place to the site designated for it, thanks to its lightweight and integrated plinth.

Vast interior space allows for a large number of devices and components, and electrical equipment shelter Marshall can be easily customized to meet the client's needs precisely.

### Marshall – technical data

#### Dimensions

- Weight about 4000 kg
- Floor load capacity 1500 kg/m<sup>2</sup>
- Volume 22 m<sup>3</sup>
- Area 8,4 m<sup>2</sup> (floor surface area) / 10 m<sup>2</sup> (building area)
- Ceiling height 2,5 m

#### Wall structure

- U-value 0,39
- Fire class P3 / EI 30
- The internal wall material is alternatively sheet metal, fiberglass or plywood; standard color is RR20
- The external wall material is alternatively sheet metal or fiberglass; standard colors are RR22 and RR23 for walls, RR23 for moldings and RR33 for the roof
- The lightweight wall structure allows for easy and quick transfer and installation of the equipment shelter

#### Equipping options

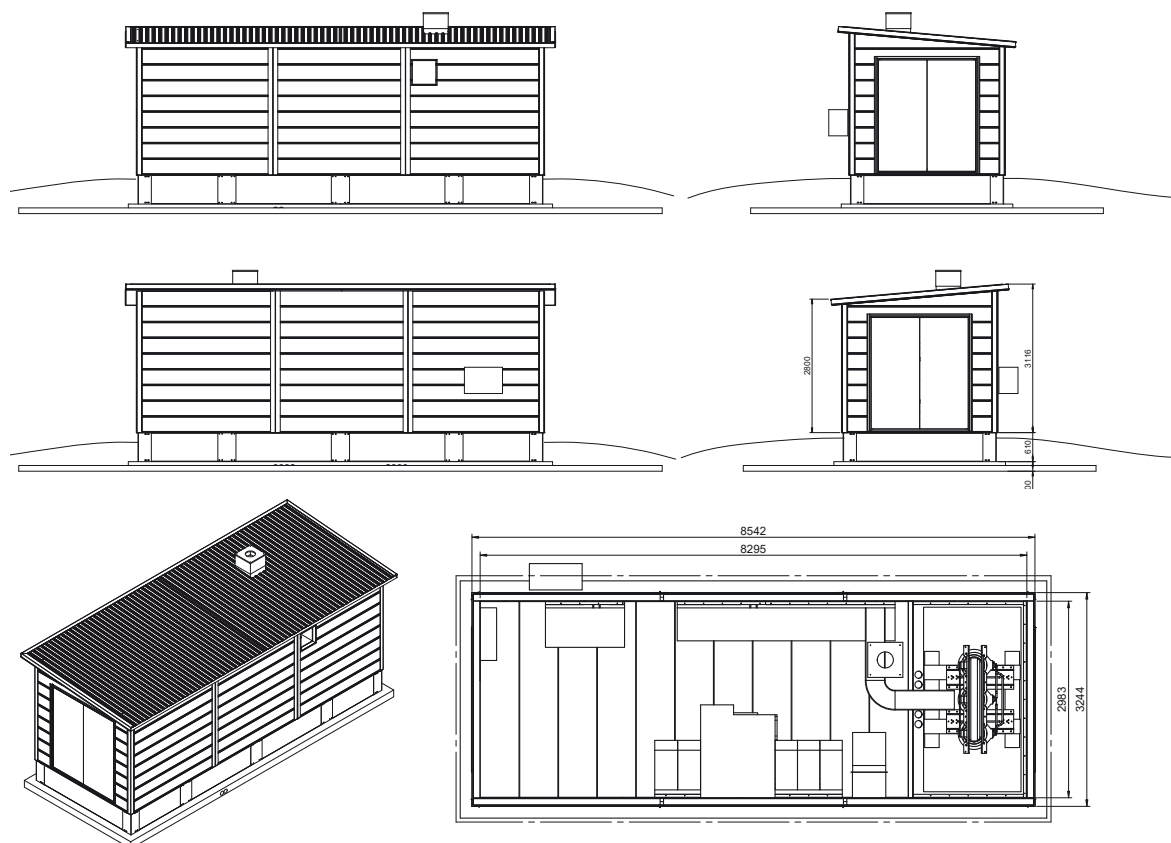
- Electrification, e.g. engine control panels, switchgear, logic control panels, lighting, sockets, grounding, cable ducts and inlets.
- A forced ventilation system, an air source heat pump, gutters, a plinth or concrete foundation pillars

#### Standard equipment:

- A lock, a door handle and pull handles
- Lifting handles on the roof
- Drawings required for permits
- Documentation and a CE mark

#### Change options

- Special cladding
- Steel frame
- Special colors



#### Color chart (RR/RAL)

Color examples are indicative

RR20  
RAL 9001

RR22  
RAL 7045

RR23  
RAL 7024

RR33  
RAL 9005

#### Production, equipping and & delivery:

Harri Haavikko Oy / Lekatie 6 / FI-50170 Mikkeli / Business ID: 2747646-3  
www.croom.fi

**HAAVIKKO**  
H A R R I





# CROOM

## Safety equipment shelter Tonga

Safety equipment shelter Tonga is an equipment shelter meant to be placed near a railway and to protect important safety systems for train traffic.

The shelter meets quality requirements applicable for railways and can be equipped with, for example,

scalable heating and cooling systems, controls and backup power for safety devices.

The shelter can be equipped according to the client's needs or delivered to be equipped by the client.

## Tonga – technical data

### Dimensions

- Weight 1900 kg
- Floor load capacity 950 kg/m<sup>2</sup>
- Volume 17,6 m<sup>3</sup>
- Area 6 m<sup>2</sup> (floor surface area) / 7,3 m<sup>2</sup> (building area)
- Ceiling height 2,2 m

### Wall structure

- U-value 0,39
- Steel frame as a standard solution
- Fire class P3 / EI 30
- The internal wall material is alternatively sheet metal, fiberglass or plywood; standard color is RR20
- The external wall material is alternatively sheet metal or fiberglass; standard colors are RR35, RR22 and RR23 for walls, RR23 for moldings and RR33 for the roof

- The lightweight wall structure allows for easy and quick transfer and installation of the equipment shelter

### Equipping options

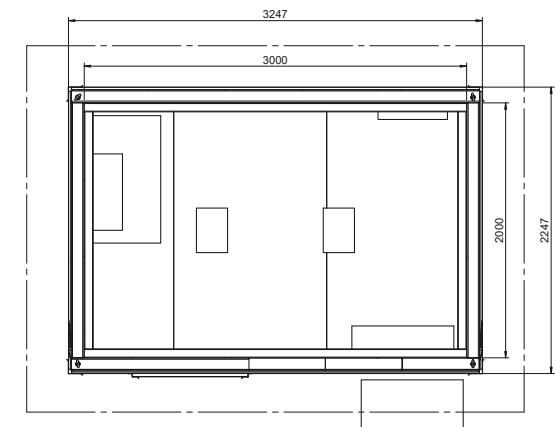
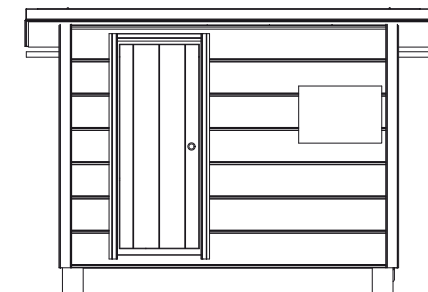
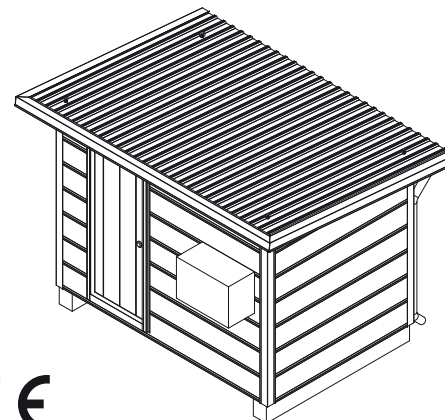
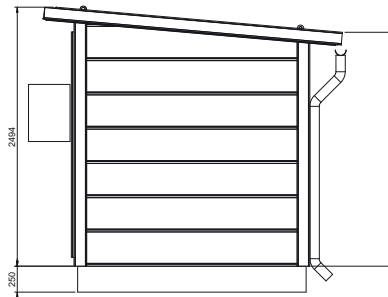
- Electrification; lighting, grounding, cable ducts and inlets
- A forced ventilation system, heating/cooling, gutters and a plinth

### Standard equipment:

- A crew hatch in the floor
- A supply air valve with a filter and a duct fan
- A lock, a door handle and pull handles
- Lifting handles on the roof
- Drawings required for permits
- Documentation and a CE mark

### Change options

- Special cladding
- Special colors



### Color chart (RR/RAL)

Color examples are indicative

RR20  
RAL 9001

RR22  
RAL 7045

RR23  
RAL 7024

RR33  
RAL 9005

RR35  
RAL 5009

### Production, equipping and & delivery:

Harri Haavikko Oy / Lekatie 6 / FI-50170 Mikkeli / Business ID: 2747646-3

[www.croom.fi](http://www.croom.fi)

**HAAVIKKO**  
H A A V I K K O

## Customized solutions of equipment shelters

If one cannot find an exactly suitable equipment shelter in our extensive cRoom collection, it is also possible to make a customized one.

Equipment shelters are designed and manufactured in accordance with the client's criteria and requirements.

cRoom shelters can be customized in terms of exterior, colors and architecture. Our patented lightweight wall structure also allows for curved shapes and quick and efficient installation.

Customized equipment shelters can be used, for example, as pump rooms, control rooms, generator and transformer shelters, utilities equipment shelters, heating centers, etc.

## Technical data

Customized equipment shelters are based on models from our cRoom collection. We assess existing needs and wishes together with the client first, and design and manufacture later.

### Production, equipping and & delivery:

Harri Haavikko Oy / Lekatie 6 / FI-50170 Mikkeli  
Business ID: 2747646-3 / [www.croom.fi](http://www.croom.fi)

## Examples of customized equipment shelters:

