



ROOM

Safety equipment shelter Tonga

Safety equipment shelter Tonga is an equipment shelter meant to be placed near a railway and to protect important safety systems for train traffic.

The shelter meets quality requirements applicable for railways and can be equipped with, for example,

scalable heating and cooling systems, controls and backup power for safety devices.

The shelter can be equipped according to the client's needs or delivered to be equipped by the client.

Tonga - technical data

Dimensions

- Weight 1900 kg
- Floor load capacity 950 kg/m²
- Volume 17,6 m³
- Area 6 m² (floor surface area) / 7,3 m² (building area)
- Ceiling height 2,2 m

Wall structure

- U-value 0,39
- Steel frame as a standard solution
- Fire class P3 / EI 30
- The internal wall material is alternatively sheet metal, fiberglass or plywood; standard color is RR20
- The external wall material is alternatively sheet metal or fiberglass; standard colors are RR35, RR22 and RR23 for walls, RR23 for moldings and RR33 for the roof

- The lightweight wall structure allows for easy and quick transfer and installation of the equipment shelter

Equipping options

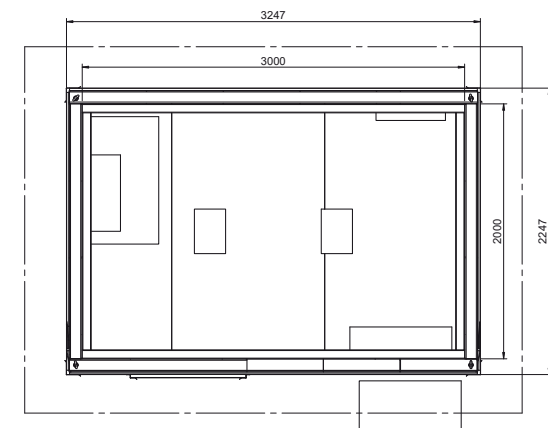
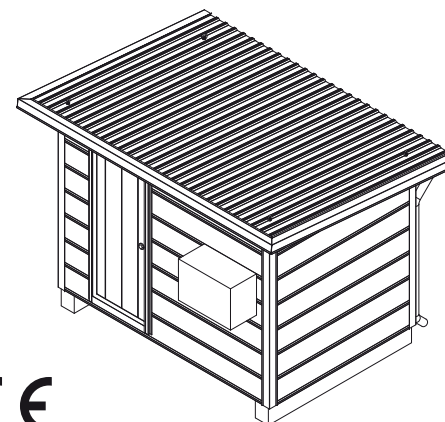
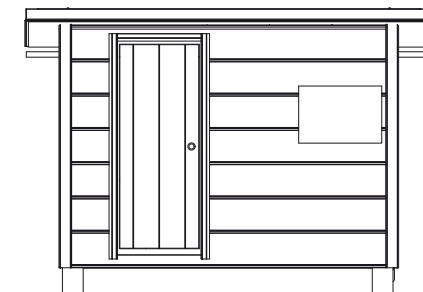
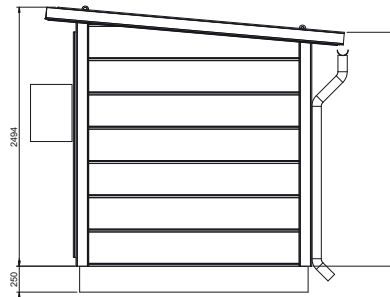
- Electrification; lighting, grounding, cable ducts and inlets
- A forced ventilation system, heating/cooling, gutters and a plinth

Standard equipment:

- A crew hatch in the floor
- A supply air valve with a filter and a duct fan
- A lock, a door handle and pull handles
- Lifting handles on the roof
- Drawings required for permits
- Documentation and a CE mark

Change options

- Special cladding
- Special colors



Color chart (RR/RAL)

Color examples are indicative

RR20
RAL 9001

RR22
RAL 7045

RR23
RAL 7024

RR33
RAL 9005

RR35
RAL 5009

Production, equipping and & delivery:

Harri Haavikko Oy / Lekatie 6 / FI-50170 Mikkeli / Business ID: 2747646-3
www.croom.fi

HAAVIKKO
H A A V I K K O