



## Electrical equipment shelter Marshall

A fairly big electrical equipment shelter for use at large production plants. Electrical equipment shelter Marshall enables electrification and providing enough energy for even a large unit or production plant.

Although the external dimensions of the shelter are large, Marshall is easy to move and place to the site designated for it, thanks to its lightweight and integrated plinth.

Vast interior space allows for a large number of devices and components, and electrical equipment shelter Marshall can be easily customized to meet the client's needs precisely.

### Marshall - technical data

#### Dimensions

- Weight about 4000 kg
- Floor load capacity 1500 kg/m<sup>2</sup>
- Volume 22 m<sup>3</sup>
- Area 8,4 m<sup>2</sup> (floor surface area) / 10 m<sup>2</sup> (building area)
- Ceiling height 2,5 m

#### Wall structure

- U-value 0,39
- Fire class P3 / EI 30
- The internal wall material is alternatively sheet metal, fiberglass or plywood; standard color is RR20
- The external wall material is alternatively sheet metal or fiberglass; standard colors are RR22 and RR23 for walls, RR23 for moldings and RR33 for the roof
- The lightweight wall structure allows for easy and quick transfer and installation of the equipment shelter

#### Equipping options

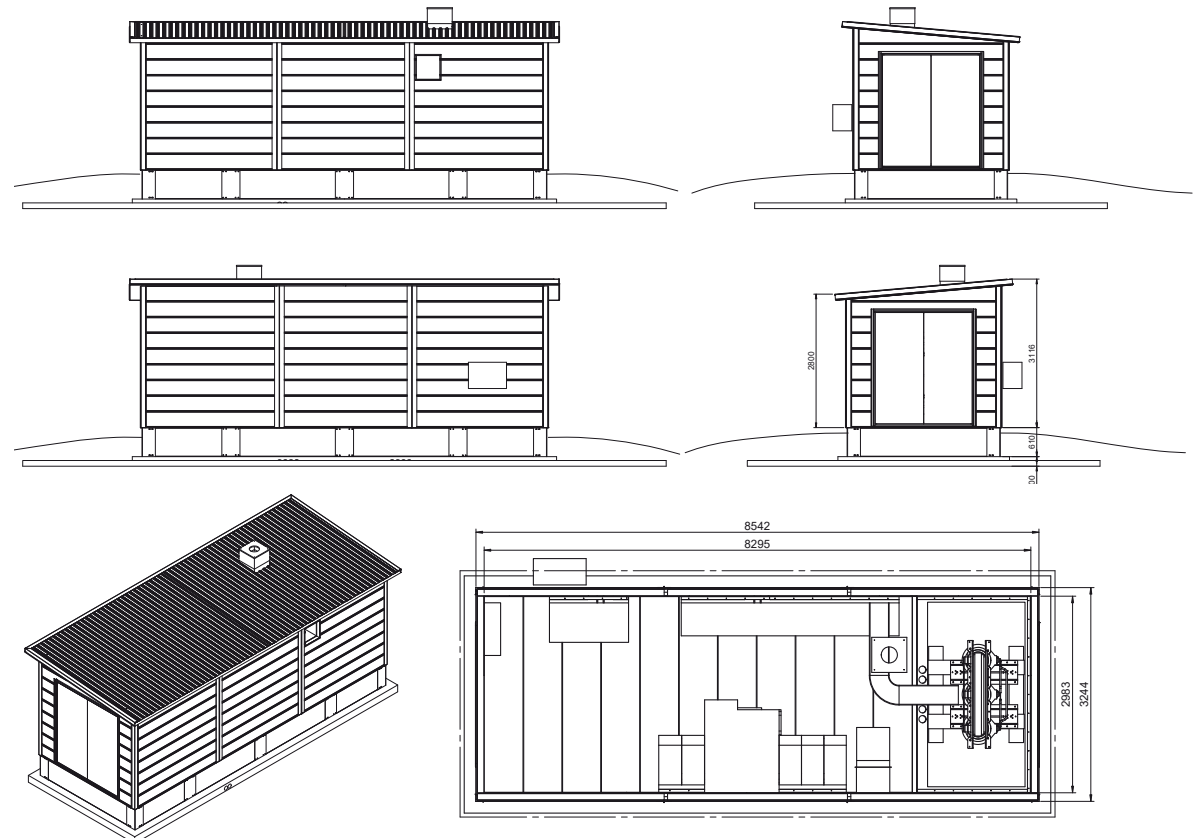
- Electrification, e.g. engine control panels, switchgear, logic control panels, lighting, sockets, grounding, cable ducts and inlets.
- A forced ventilation system, an air source heat pump, gutters, a plinth or concrete foundation pillars

#### Standard equipment:

- A lock, a door handle and pull handles
- Lifting handles on the roof
- Drawings required for permits
- Documentation and a CE mark

#### Change options

- Special cladding
- Steel frame
- Special colors



#### Color chart (RR/RAL)

Color examples are indicative

RR20  
RAL 9001

RR22  
RAL 7045

RR23  
RAL 7024

RR33  
RAL 9005

#### Production, equipping and & delivery:

Harri Haavikko Oy / Lekatie 6 / FI-50170 Mikkeli / Business ID: 2747646-3  
www.croom.fi

**HAAVIKKO**  
H A R R I