



## Shelter for telecom equipment Manua

The smaller shelter for telecom equipment in our collection is designed for mobile network operators and providers that need a high-quality and secure equipment shelter to ensure impeccable operation of their networks and telecommunications.

The shelter for telecom equipment can be customized in terms of equipping and architecture, thus ensuring that the client's requirements are met.

### Manua - technical data

#### Dimensions

- Weight 1300 kg
- Floor load capacity 950 kg/m<sup>2</sup>
- Volume 22 m<sup>3</sup>
- Area 8,4 m<sup>2</sup> (floor surface area) / 10 m<sup>2</sup> (building area)
- Ceiling height 2,5 m

#### Wall structure

- U-value 0,39
- Fire class P3 / EI 30
- The internal wall material is alternatively sheet metal, fiberglass or plywood; standard color is RR20
- The external wall material is alternatively sheet metal or fiberglass; standard colors are RR22 and RR23 for walls, RR23 for moldings and RR33 for the roof
- The lightweight wall structure allows for easy and quick transfer and installation of the equipment shelter

#### Equipping options

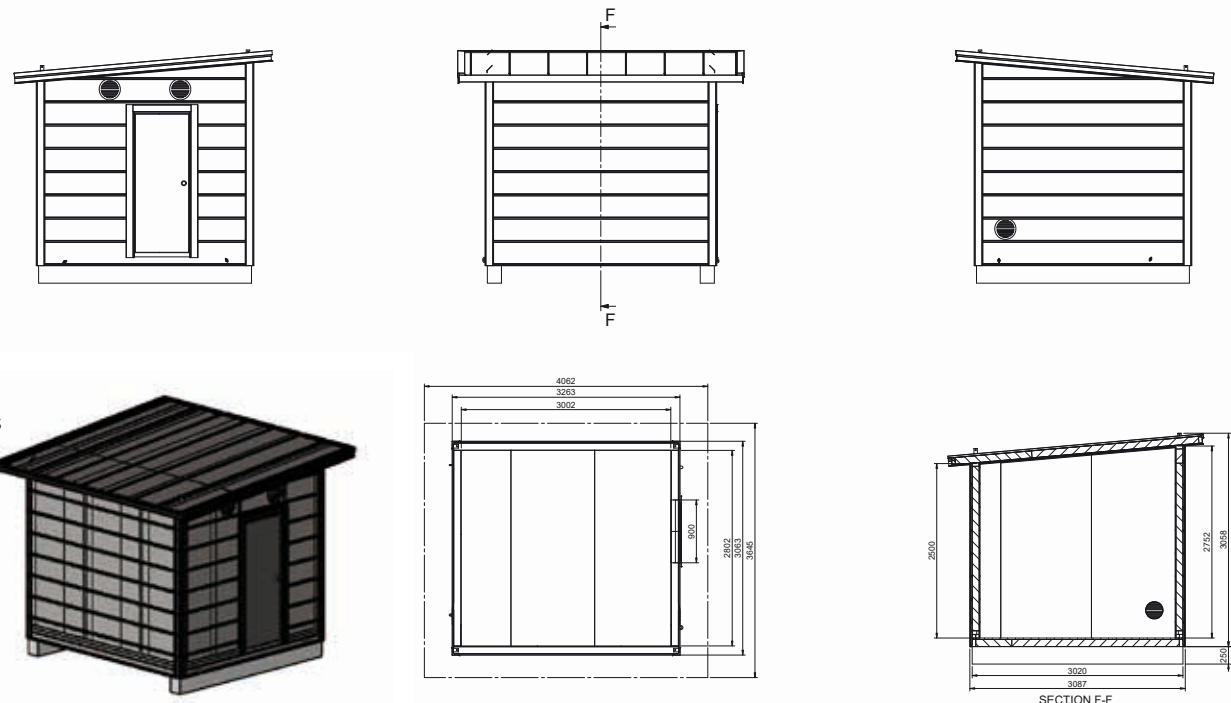
- Electrification, e.g. a measuring power panel board, lighting, sockets, grounding, cable ducts and inlets.
- A forced ventilation system, an air source heat pump and gutters

#### Standard equipment:

- A crew hatch in the floor
- A supply air valve with a filter and a duct fan
- A lock, a door handle and pull handles
- Lifting handles on the roof
- Drawings required for permits
- Documentation and a CE mark

#### Change options

- Special cladding
- Steel frame
- Special colors



#### Color chart (RR/RAL)

Color examples are indicative

RR20  
RAL 9001

RR22  
RAL 7045

RR23  
RAL 7024

RR33  
RAL 9005

#### Production, equipping and & delivery:

Harri Haavikko Oy / Lekatie 6 / FI-50170 Mikkeli / Business ID: 2747646-3  
www.croom.fi